

Relevés climatiques

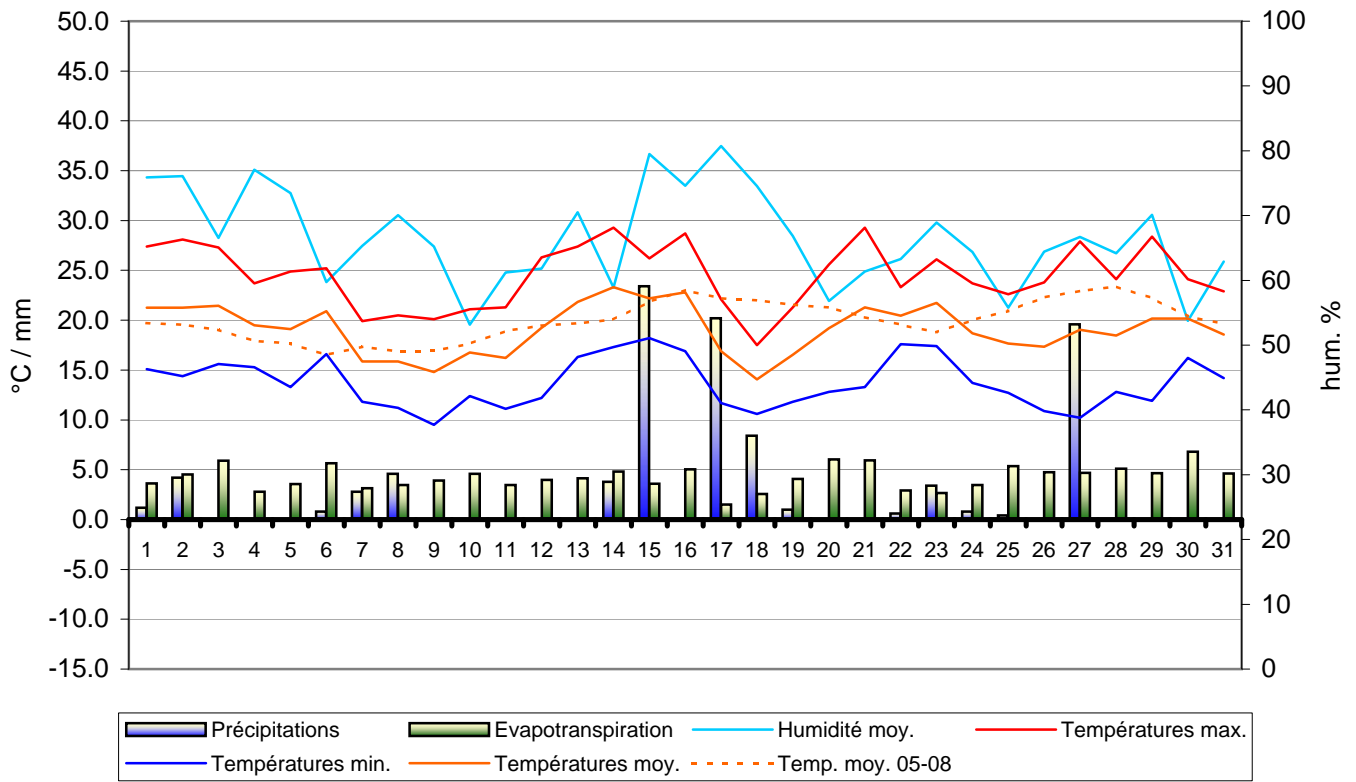
Valeyrès-sous-Montagny: Juillet 2009

Juillet 2009	Températures °C air/+2m			Humidité relative moy. %	Précipitations mm	Etp. mm	Durée ensoleillement	Rayonnement solaire W/m ²	Pression atm. moy. hPa	Vent moy. Km/h	Vent max. km/h	Dir. dominant du vent °
	Date	Moy.	Max.									
1	21.3	27.4	15.1	75.9	1.2	3.6	8:10	876	1018.4	4.1	20.9	67.5
2	21.3	28.1	14.4	76.1	4.2	4.5	10:30	868	1016.5	4.9	90.1	32.5
3	21.5	27.3	15.6	66.5	0.0	5.9	12:00	883	1014.5	9.8	37.0	270.0
4	19.5	23.7	15.3	77.1	0.0	2.8	5:40	931	1012.7	4.8	25.7	45.0
5	19.1	24.9	13.3	73.5	0.0	3.6	7:10	1172	1011.3	5.7	32.2	0/360
6	20.9	25.2	16.6	59.7	0.8	5.7	11:40	925	1011.0	12.1	45.1	292.5
7	15.9	19.9	11.8	65.3	2.8	3.1	6:00	539	1011.4	11.4	46.7	247.5
8	15.9	20.5	11.2	70.0	4.6	3.5	8:00	1090	1015.9	10.2	37.0	270.0
9	14.8	20.1	9.5	65.2	0.0	3.9	9:30	972	1017.1	12.3	62.8	270.0
10	16.8	21.1	12.4	53.2	0.0	4.6	9:30	1071	1018.0	9.8	35.4	292.5
11	16.2	21.3	11.1	61.2	0.0	3.5	9:50	938	1018.0	4.2	20.9	202.5
12	19.3	26.3	12.2	61.8	0.0	4.0	9:10	928	1014.7	7.5	40.2	225.0
13	21.9	27.4	16.3	70.5	0.0	4.1	9:00	1020	1012.6	6.1	29.0	67.5
14	23.3	29.3	17.3	58.9	3.8	4.8	9:40	1014	1012.4	7.5	53.1	202.5
15	22.2	26.2	18.2	79.5	23.4	3.6	8:30	929	1017.9	5.6	27.4	90.0
16	22.8	28.7	16.9	74.6	0.0	5.0	11:20	928	1019.2	5.1	22.5	90.0
17	16.9	22.1	11.7	80.7	20.2	1.5	2:10	422	1014.0	9.2	59.5	225.0
18	14.1	17.5	10.6	74.6	8.4	2.6	7:00	838	1018.4	9.7	43.5	247.5
19	16.6	21.3	11.8	66.8	1.0	4.1	9:00	1003	1020.5	8.9	41.8	270.0
20	19.2	25.6	12.8	56.8	0.0	6.0	11:40	862	1019.6	9.3	40.2	202.5
21	21.3	29.3	13.3	61.4	0.0	5.9	11:20	847	1015.5	7.8	53.1	225.0
22	20.5	23.3	17.6	63.3	0.6	2.9	6:00	860	1011.4	6.3	41.8	112.5
23	21.8	26.1	17.4	68.9	3.4	2.7	4:10	903	1008.9	8.6	51.5	112.5
24	18.7	23.7	13.7	64.4	0.8	3.5	6:20	825	1017.0	9.7	40.2	225.0
25	17.7	22.6	12.7	55.8	0.4	5.4	11:10	958	1024.0	8.8	35.4	292.5
26	17.4	23.8	10.9	64.4	0.0	4.8	11:30	845	1021.5	5.2	20.9	112.5
27	19.1	27.9	10.2	66.7	19.6	4.7	9:40	942	1015.7	7.9	133.6	112.5
28	18.5	24.1	12.8	64.2	0.0	5.1	11:30	835	1020.1	7.0	32.2	45.0
29	20.2	28.4	11.9	70.1	0.0	4.7	11:10	825	1018.0	2.9	17.7	45.0
30	20.2	24.1	16.2	53.8	0.0	6.8	11:30	921	1020.7	16.9	56.3	292.5
31	18.6	22.9	14.2	62.9	0.0	4.6	10:30	1034	1020.0	10.0	40.2	90.0

Température moy:	19.1 °C		Humidité moy:	66.6 %
Température max:	29.3 °C	Juillet: 21	Ray. solaire :	903 W/m²
Température min:	9.5 °C	Juillet: 9	Ensoleillement:	280:20 hhh:mm
Temp. moy. Juil. 05 - 08:	20.1 °C		Pression atm. Moy:	1016.4 hPa
Précipitations:	95.2 mm		Vent moyen:	8.0 km/h
Evapotranspiration:	131.4 mm		Rafale maximum:	133.6 km/h
Bilan hydrique:	-36.2 mm		Dir. dominant du vent:	270.0 en °

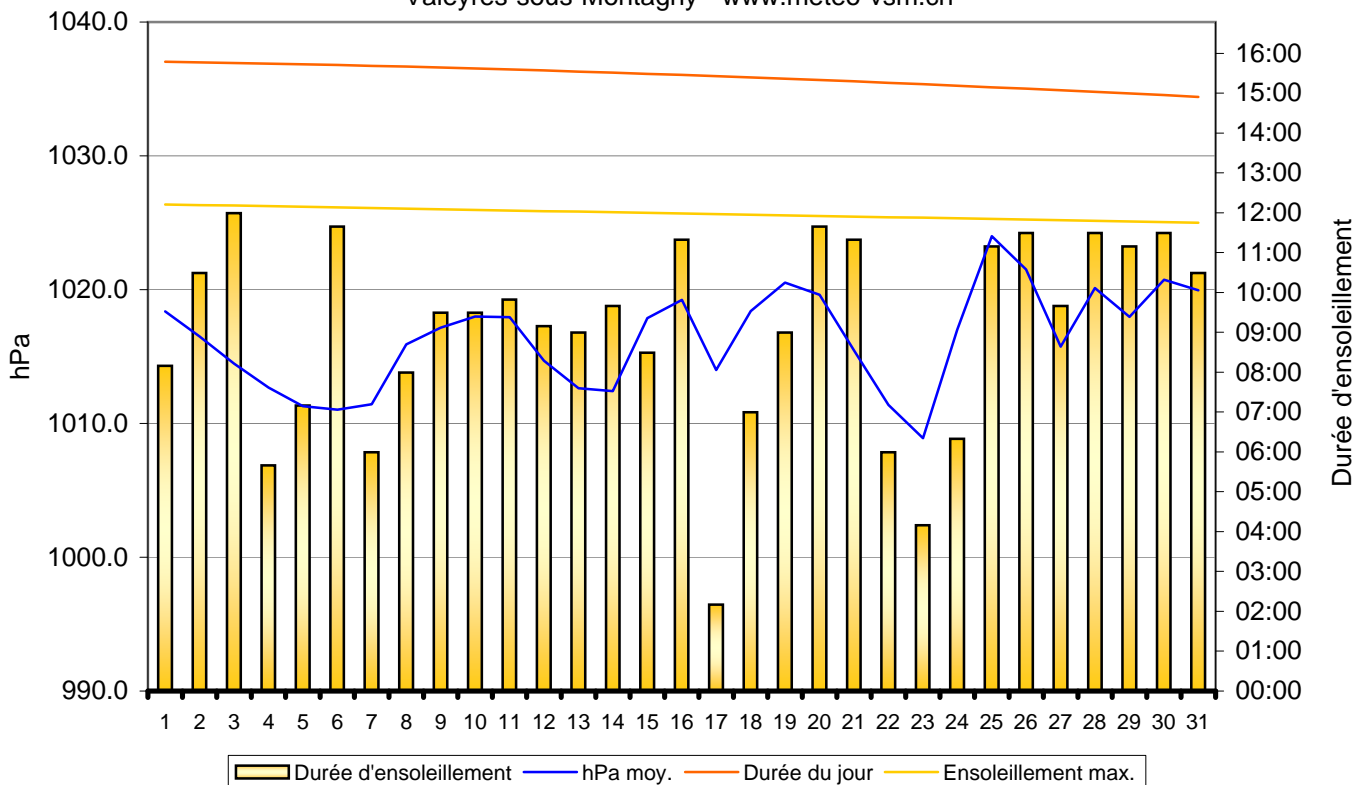
Observations:

Précipitations - Etp. - Température - Humidité - Vents - Juillet 2009
Valeyres-sous-Montagny - www.meteo-vsm.ch

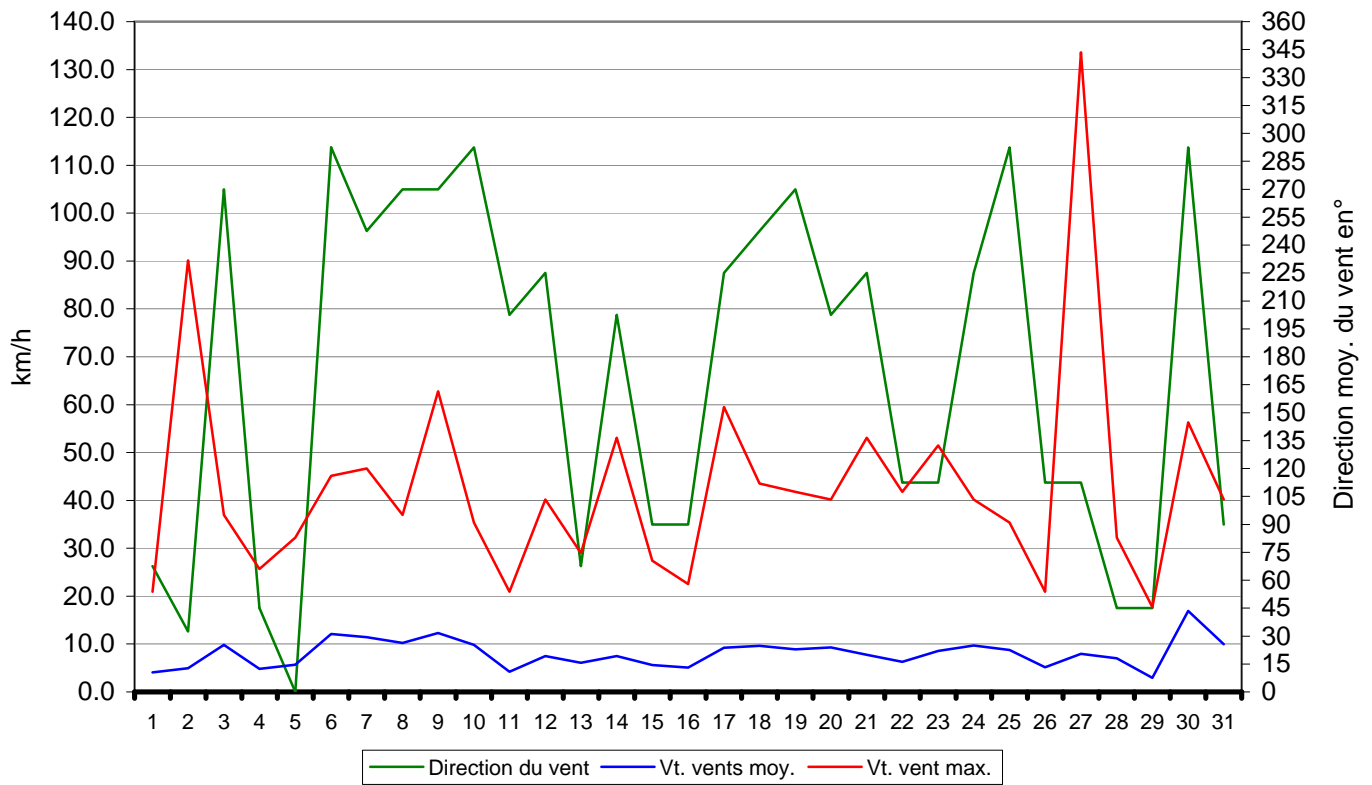


Pressions atm. moyennes - Durée d'ensoleillement - Juillet 2009

Valeyres-sous-Montagny - www.meteo-vsm.ch



Direction du vent - Vitesse max. - Vitesse moy. - Juillet 2009
Valeyres-sous-Montagny - www.meteo-vsm.ch



4 Années

Température moyenne	Température total	Température moy. 2005	Température moy. 2006	Température moy. 2007	Température moy. 2008	Température moy. 200X
19.7	78.8	16.9	21.8	18.6	21.5	0.0
19.6	78.2	17.8	22.1	16.1	22.2	0.0
19.1	76.2	20.3	23.8	14.3	17.8	0.0
17.9	71.7	17.9	24.2	13.4	16.2	0.0
17.7	70.7	16.2	22.7	12.7	19.1	0.0
16.5	66.0	13.9	18.3	16.3	17.5	0.0
17.3	69.3	13.6	18.8	20.7	16.2	0.0
16.9	67.4	14.3	19.8	17.4	15.9	0.0
16.9	67.7	14.2	20.2	15.8	17.5	0.0
17.7	70.7	16.8	23.2	11.5	19.2	0.0
18.9	75.6	18.0	24.8	12.6	20.2	0.0
19.5	77.8	20.1	24.3	16.3	17.1	0.0
19.7	78.7	21.6	24.5	18.8	13.8	0.0
20.1	80.3	21.4	23.7	22.0	13.2	0.0
21.8	87.3	25.7	24.5	23.3	13.8	0.0
23.0	92.1	25.3	24.2	23.8	18.8	0.0
22.2	88.7	24.5	22.7	23.2	18.3	0.0
22.0	88.0	22.2	24.5	22.9	18.4	0.0
21.6	86.2	20.0	24.9	21.9	19.4	0.0
21.3	85.2	16.7	26.9	20.8	20.8	0.0
20.3	81.2	21.1	25.4	19.1	15.6	0.0
19.6	78.2	18.5	26.1	18.3	15.3	0.0
18.8	75.1	17.3	24.3	16.9	16.6	0.0
20.0	80.0	20.0	25.4	16.5	18.1	0.0
21.0	83.8	20.8	26.3	17.4	19.3	0.0
22.3	89.1	23.5	23.9	20.1	21.6	0.0
22.9	91.7	24.8	24.1	23.1	19.7	0.0
23.4	93.5	27.6	22.5	22.1	21.3	0.0
22.2	88.9	24.0	21.5	21.7	21.7	0.0
20.4	81.6	20.8	22.8	17.1	20.9	0.0
19.7	78.6	19.3	21.5	16.4	21.4	0.0

ensoleillement

1	12:13	11:48
2	12:12	
3	12:11	
4	12:10	
5	12:09	
6	12:08	
7	12:07	
8	12:06	
9	12:05	
10	12:05	
11	12:04	
12	12:03	11:48
13	12:02	
14	12:01	11:42
15	12:00	11:42
16	11:59	
17	11:58	
18	11:57	
19	11:56	
20	11:55	
21	11:54	
22	11:54	11:48
23	11:53	
24	11:52	
25	11:51	
26	11:50	

27	11:49	11:18
28	11:48	11:18
29	11:47	
30	11:46	
31	11:45	
	371:44	