

Relevés climatiques

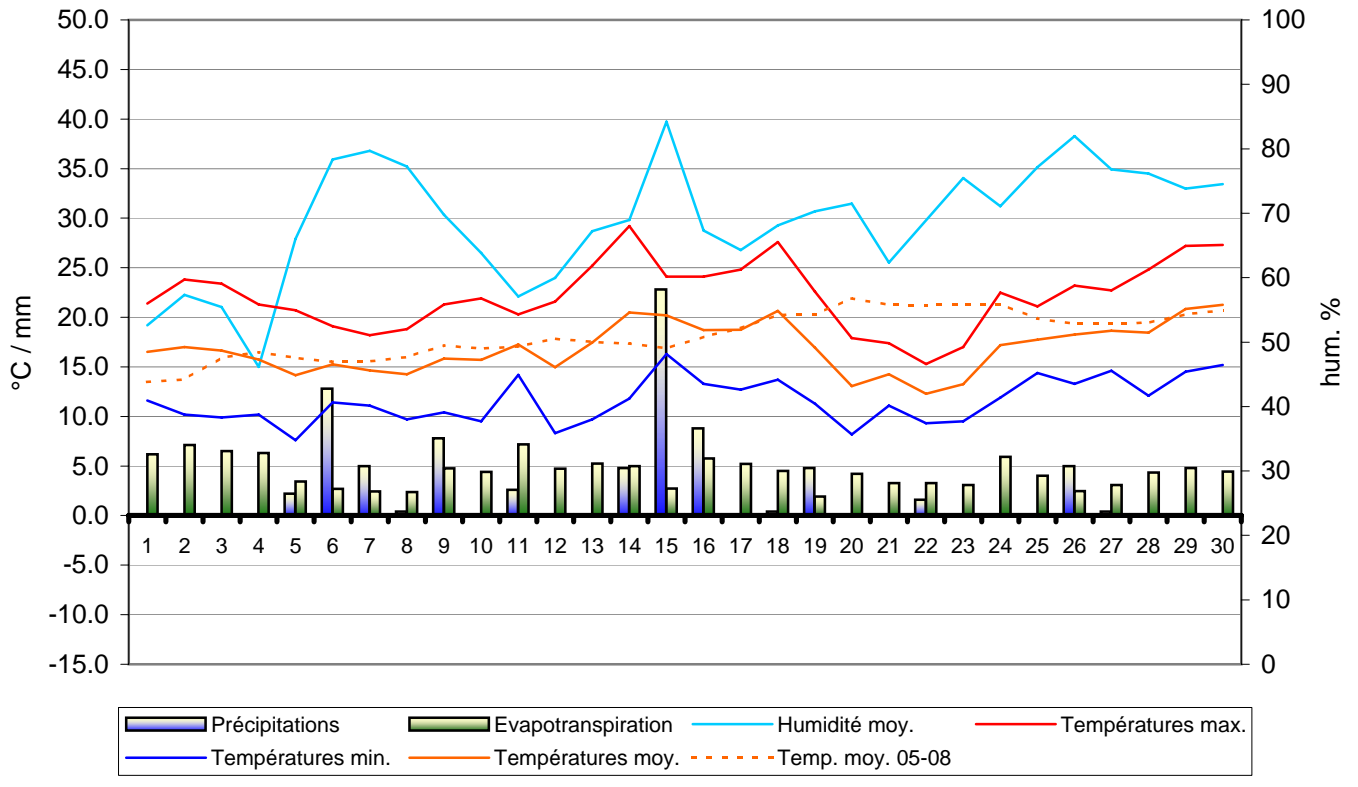
Valeires-sous-Montagny: Juin 2009

Juin 2009	Températures °C air/+2m			Humidité relative moy. %	Précipitations mm	Etp. mm	Durée ensoleillement	Rayonnement solaire W/m²	Pression atm. moy. hPa	Vent moy. Km/h	Vent max. km/h	Dir. dominant du vent en °
	Date	Moy.	Max.									
1	16.5	21.4	11.6	52.6	0.0	6.2	10:30	988	1015.9	19.6	48.3	67.5
2	17.0	23.8	10.2	57.3	0.0	7.1	11:10	894	1015.9	14.8	43.5	67.5
3	16.7	23.4	9.9	55.4	0.0	6.5	12:05	959	1014.7	10.4	41.8	90.0
4	15.8	21.3	10.2	46.2	0.0	6.3	12:05	1023	1012.7	9.5	32.2	315.0
5	14.2	20.7	7.6	66.0	2.2	3.4	08:20	996	1007.3	4.5	24.1	315.0
6	15.3	19.1	11.4	78.4	12.8	2.7	06:00	631	1000.5	11.6	51.5	225.0
7	14.7	18.2	11.1	79.7	5.0	2.5	05:30	943	1007.4	10.9	49.9	225.0
8	14.3	18.8	9.7	77.3	0.4	2.4	08:30	821	1009.9	3.7	32.2	292.5
9	15.9	21.3	10.4	69.8	7.8	4.8	08:40	1041	1012.7	13.7	61.2	270.0
10	15.7	21.9	9.5	63.8	0.0	4.4	09:40	922	1016.7	9.5	45.1	270.0
11	17.3	20.3	14.2	57.1	2.6	7.2	10:20	1037	1018.9	19.3	48.3	270.0
12	15.0	21.6	8.3	60.0	0.0	4.7	12:00	1017	1022.2	6.4	33.8	315.0
13	17.5	25.2	9.7	67.2	0.0	5.3	12:10	895	1020.9	4.2	14.5	90.0
14	20.5	29.2	11.8	68.9	4.8	5.0	09:50	1015	1019.7	7.3	49.9	270.0
15	20.2	24.1	16.3	84.2	22.8	2.7	07:10	911	1017.6	7.6	67.6	315.0
16	18.7	24.1	13.3	67.3	8.8	5.8	10:50	959	1021.4	12.5	41.8	292.5
17	18.8	24.8	12.7	64.3	0.0	5.2	10:50	901	1021.5	6.3	24.1	90.0
18	20.7	27.6	13.7	68.1	0.4	4.5	10:00	1083	1019.2	7.2	45.1	90.0
19	17.0	22.6	11.3	70.3	4.8	1.9	01:40	270	1018.4	8.1	40.2	247.5
20	13.1	17.9	8.2	71.5	0.0	4.2	10:40	1176	1020.8	11.4	51.5	337.5
21	14.3	17.4	11.1	62.3	0.0	3.3	09:40	653	1021.2	9.9	35.4	32.5
22	12.3	15.3	9.3	68.9	1.6	3.3	08:00	1020	1022.1	10.4	53.1	67.5
23	13.3	17.0	9.5	75.5	0.0	3.1	06:10	953	1021.2	19.5	53.1	67.5
24	17.2	22.5	11.9	71.1	0.0	5.9	10:40	869	1014.3	25.1	48.3	67.5
25	17.8	21.1	14.4	77.2	0.0	4.0	08:20	1070	1010.7	10.5	37.0	90.0
26	18.3	23.2	13.3	82.0	5.0	2.5	04:10	1048	1010.8	4.8	35.4	292.5
27	18.7	22.7	14.6	76.8	0.4	3.1	09:10	979	1014.1	6.3	32.2	247.5
28	18.5	24.8	12.1	76.1	0.0	4.4	09:20	866	1014.2	5.9	20.9	0/360
29	20.9	27.2	14.5	73.8	0.0	4.8	10:10	976	1015.5	5.9	29.0	90.0
30	21.3	27.3	15.2	74.5	0.0	4.4	09:20	946	1017.6	5.3	24.1	0/360

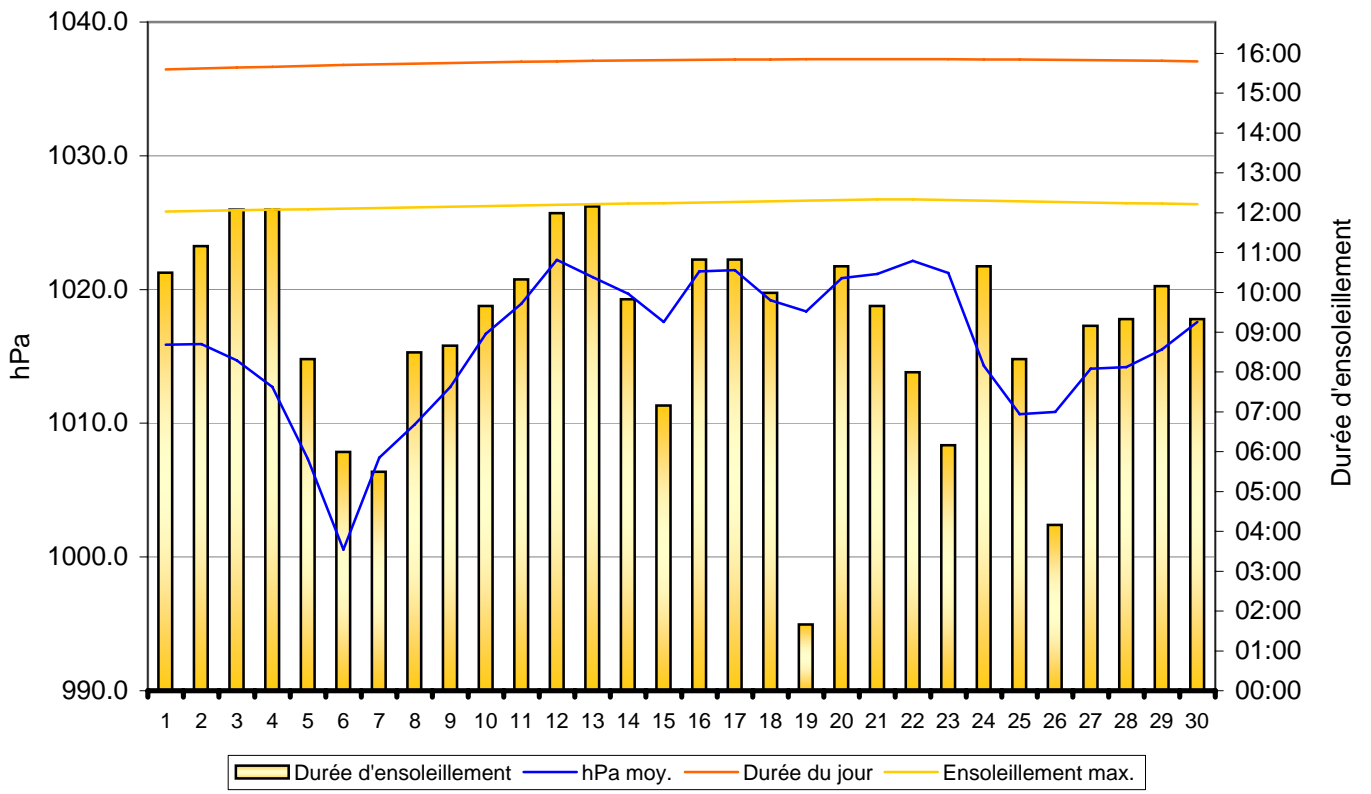
Température moy:	16.9 °C	Humidité moy:	68.8 %	
Température max:	29.2 °C	Jun: 14	Ray. solaire :	928.7 W/m²
Température min:	7.6 °C	Jun: 5	Ensoleillement:	273:00 hhh:mm
Temp. moy. Juin. 05 -08:	18.4 °C		Pression atm. Moy:	1015.9 hPa
Précipitations:	79.4 mm		Vent moyen:	10.1 km/h
Evapotranspiration:	131.5 mm		Rafale maximum:	67.6 km/h
Bilan hydrique:	-52.1 mm		Dir. dominant du vent:	67.5 en °

Observations:

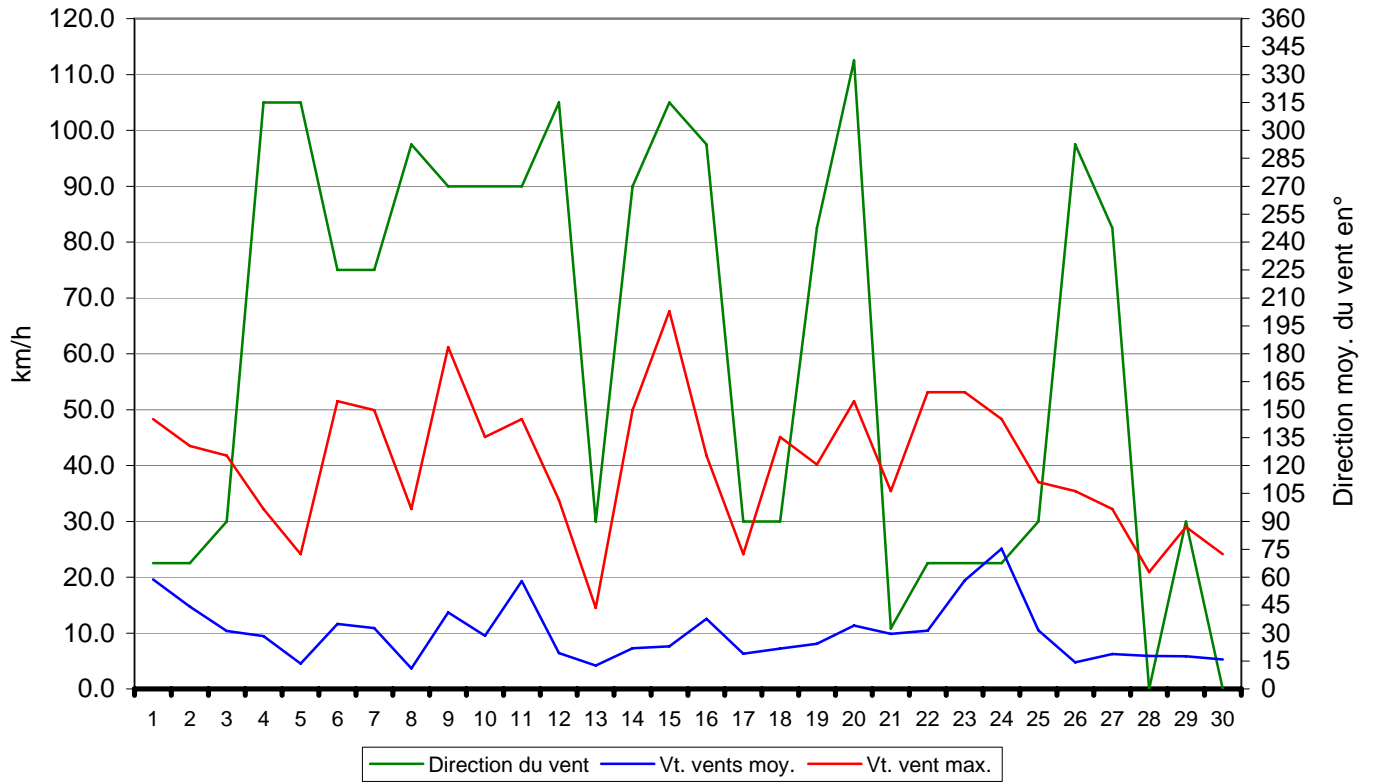
Précipitations - Etp. - Température - Humidité - Vents - Juin 2009
 Valeyres-sous-Montagny - www.meteo-vsm.ch



Pressions atm. moyennes - Durée d'ensoleillement - Juin 2009
 Valeyres-sous-Montagny - www.meteo-vsm.ch



Direction du vent - Vitesse max. - Vitesse moy. - Juin 2009
Valeyres-sous-Montagny - www.meteo-vsm.ch



4 Années

Température moyenne	Température total	Température moy. 2005	Température moy. 2006	Température moy. 2007	Température moy. 2008	Température moy. 200X
13.5	53.9	15.6	9.7	11.9	16.7	0.0
13.7	54.9	16.8	9.0	13.1	16.0	0.0
16.0	63.8	19.5	12.6	15.9	15.8	0.0
16.5	65.9	17.5	15.9	17.8	14.7	0.0
15.9	63.6	16.0	14.2	19.1	14.3	0.0
15.5	62.1	15.1	14.9	19.9	12.2	0.0
15.6	62.2	14.8	15.2	20.2	12.0	0.0
16.0	64.0	12.6	15.6	20.2	15.6	0.0
17.2	68.7	13.3	16.2	21.8	17.4	0.0
16.9	67.4	14.0	17.5	18.8	17.1	0.0
17.1	68.2	15.1	19.3	17.6	16.2	0.0
17.9	71.4	17.8	19.7	18.2	15.7	0.0
17.5	70.1	17.1	21.0	20.0	12.0	0.0
17.4	69.4	14.8	22.4	19.9	12.3	0.0
16.9	67.5	17.9	23.4	16.5	9.7	0.0
18.0	72.1	19.7	23.3	17.7	11.4	0.0
18.9	75.6	20.0	23.5	17.8	14.3	0.0
20.2	80.9	22.0	22.1	20.3	16.5	0.0
20.3	81.2	22.0	20.1	21.3	17.8	0.0
21.9	87.6	21.6	22.3	23.2	20.5	0.0
21.3	85.1	22.6	22.8	19.2	20.5	0.0
21.2	84.9	23.8	20.9	17.8	22.4	0.0
21.3	85.3	23.1	21.5	17.7	23.0	0.0
21.3	85.3	23.1	21.4	18.2	22.6	0.0
19.9	79.5	19.7	22.4	15.5	21.9	0.0
19.4	77.4	22.4	21.1	12.8	21.1	0.0
19.4	77.5	23.6	21.6	12.4	19.9	0.0
19.5	77.8	23.3	21.0	14.3	19.2	0.0
20.3	81.2	21.2	22.6	16.6	20.8	0.0
20.7	82.8	20.5	21.5	19.0	21.8	0.0

ensoleillement		1.35
1	12:02	
2	12:03	
3	12:04	
4	12:05	
5	12:05	
6	12:06	
7	12:07	11:42
8	12:08	11:42
9	12:09	11:42
10	12:10	11:42
11	12:11	11:42
12	12:12	11:42
13	12:13	
14	12:14	
15	12:15	
16	12:16	
17	12:16	
18	12:17	
19	12:18	
20	12:19	
21	12:20	
22	12:20	
23	12:19	
24	12:18	
25	12:17	
26	12:16	

27	12:16
28	12:15
29	12:14
30	12:13
	366:32