

## Relevés climatiques

Valeires-sous-Montagny: Octobre 2009

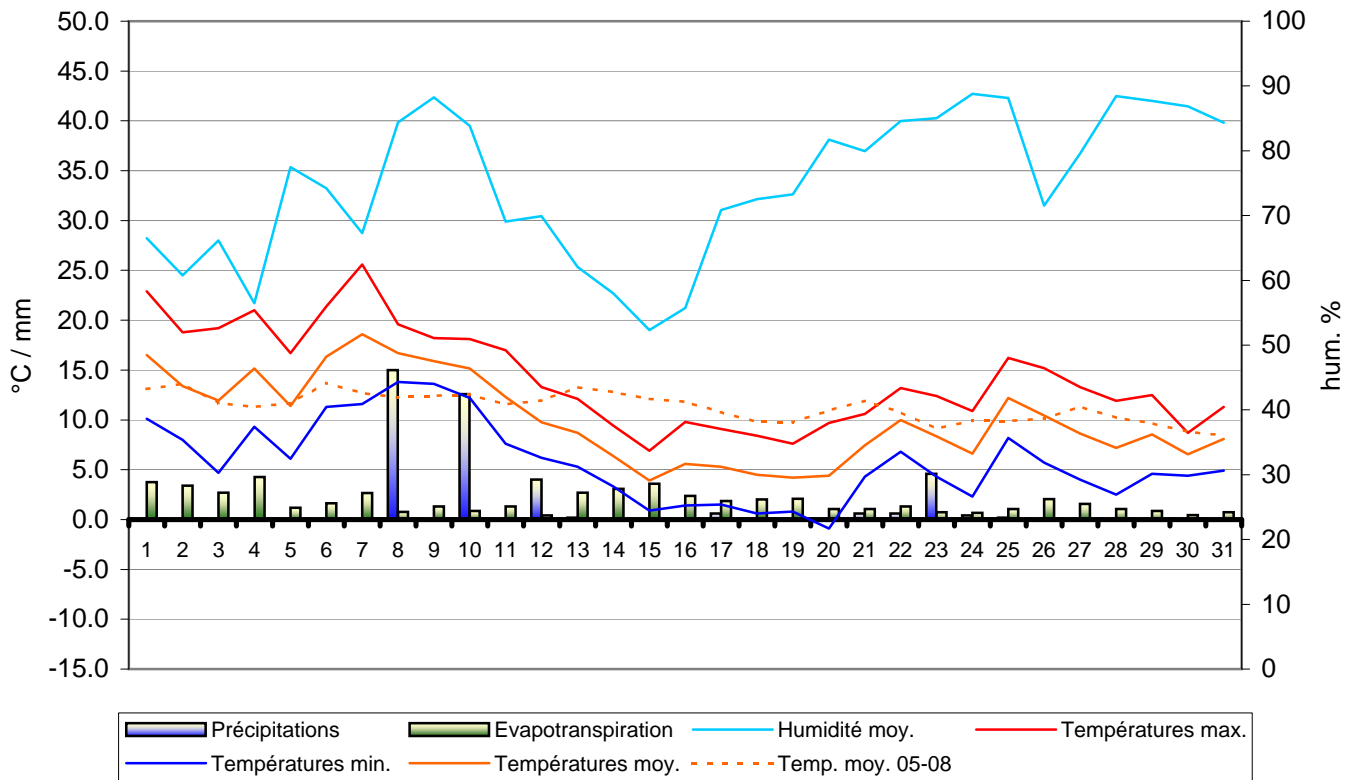
Oct. 2009	Températures °C air/+2m			Humidité relative moy. %	Précipitations mm	Etp. mm	Durée ensoleillement	Rayonnement solaire W/m <sup>2</sup>	Pression atm. moy. hPa	Vent moy. Km/h	Vent max. km/h	Dir. dominant du vent en °
	Date	Moy.	Max.									
1	16.5	22.9	10.1	66.5	0.0	3.8	7:50	676	1016.5	10.2	46.7	270.0
2	13.4	18.8	8.0	60.8	0.0	3.4	8:30	663	1018.5	7.6	38.6	0/360
3	12.0	19.2	4.7	66.2	0.0	2.7	8:30	601	1019.2	4.2	20.9	225.0
4	15.2	21.0	9.3	56.5	0.0	4.3	8:20	588	1018.1	14.1	43.5	292.5
5	11.4	16.7	6.1	77.5	0.0	1.2	3:10	305	1019.3	3.5	19.3	337.5
6	16.4	21.4	11.3	74.2	0.0	1.6	2:20	339	1019.6	6.4	38.6	247.5
7	18.6	25.6	11.6	67.3	0.0	2.7	6:50	563	1017.9	4.6	19.3	292.5
8	16.7	19.6	13.8	84.4	15.0	0.8	0:00	194	1017.3	2.8	37.0	225.0
9	15.9	18.2	13.6	88.3	0.0	1.3	5:00	733	1018.5	0.0	0.0	---
10	15.2	18.1	12.2	83.9	12.6	0.9	2:20	492	1018.0	0.0	0.0	---
11	12.3	17.0	7.6	69.1	0.0	1.3	6:10	523	1020.2	0.0	0.0	---
12	9.8	13.3	6.2	69.9	4.0	0.4	0:00	157	1020.8	0.0	1.6	247.5
13	8.7	12.1	5.3	62.1	0.2	2.7	6:30	668	1028.2	9.1	37.0	0/360
14	6.4	9.4	3.3	57.9	0.0	3.1	6:00	596	1026.7	16.9	45.1	67.5
15	3.9	6.9	0.9	52.3	0.0	3.6	7:00	557	1026.6	22.6	51.5	45.0
16	5.6	9.8	1.4	55.7	0.0	2.4	6:10	557	1027.6	11.8	40.2	45.0
17	5.3	9.1	1.5	70.8	0.6	1.9	4:10	630	1024.0	11.4	48.3	337.5
18	4.5	8.4	0.6	72.5	0.0	2.0	5:20	745	1023.6	11.9	30.6	67.5
19	4.2	7.6	0.8	73.3	0.0	2.1	7:10	622	1020.2	11.5	33.8	90.0
20	4.4	9.7	-0.9	81.7	0.0	1.1	4:20	609	1013.4	3.1	14.5	67.5
21	7.5	10.6	4.3	79.9	0.6	1.1	1:50	605	1006.6	7.3	27.4	67.5
22	10.0	13.2	6.8	84.6	0.6	1.3	4:20	593	1005.0	4.3	16.1	67.5
23	8.4	12.4	4.3	85.0	4.6	0.7	1:00	290	1014.3	5.9	27.4	247.5
24	6.6	10.9	2.3	88.8	0.4	0.7	2:40	484	1020.7	2.4	11.3	270.0
25	12.2	16.2	8.2	88.1	0.2	1.1	3:10	532	1020.2	5.0	29.0	45.0
26	10.5	15.2	5.7	71.5	0.0	2.1	6:40	517	1022.3	6.2	27.4	0/360
27	8.7	13.3	4.0	79.6	0.0	1.6	6:50	491	1024.6	4.0	20.9	0/360
28	7.2	11.9	2.5	88.4	0.0	1.1	5:00	480	1024.2	3.7	11.3	270.0
29	8.6	12.5	4.6	87.7	0.0	0.9	3:50	431	1023.4	3.4	14.5	67.5
30	6.6	8.7	4.4	86.9	0.0	0.4	0:00	114	1026.5	6.5	24.1	0/360
31	8.1	11.3	4.9	84.4	0.0	0.7	3:20	402	1028.0	2.5	11.3	315.0

Température moy:	<b>10.0 °C</b>	Humidité moy:	<b>74.7 %</b>
Température max:	<b>25.6 °C</b>	Ray. solaire :	<b>508.3 W/m<sup>2</sup></b>
Température min:	<b>-0.9 °C</b>	Ensoleillement:	<b>144:20 hhh:mm</b>
Temp. moy. Oct. 05 - 08:	<b>11.4 °C</b>	Pression atm. Moy:	<b>1020.3 hPa</b>
Précipitations:	<b>38.8 mm</b>	Vent moyen:	<b>6.5 km/h</b>
Evapotranspiration:	<b>54.6 mm</b>	Rafale maximum:	<b>51.5 km/h</b>
Bilan hydrique:	<b>-15.8 mm</b>	Dir. dominant du vent:	<b>67.5 en °</b>

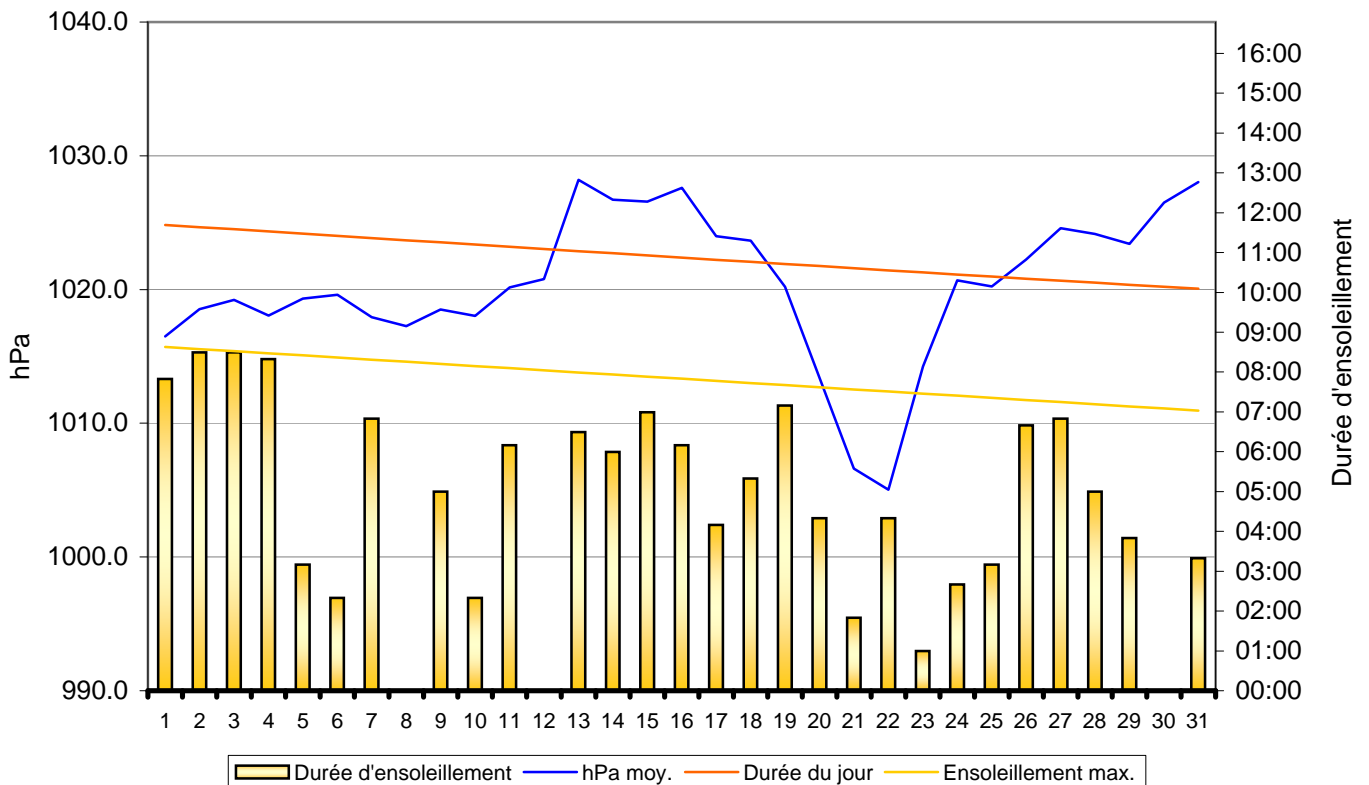
### Observations:

17.10.09 - Chute de neige: 1300m. / 18.10.09 - Chute de neige: 800m. / 09 au 11.10.09 interruption de l'anémomètre.

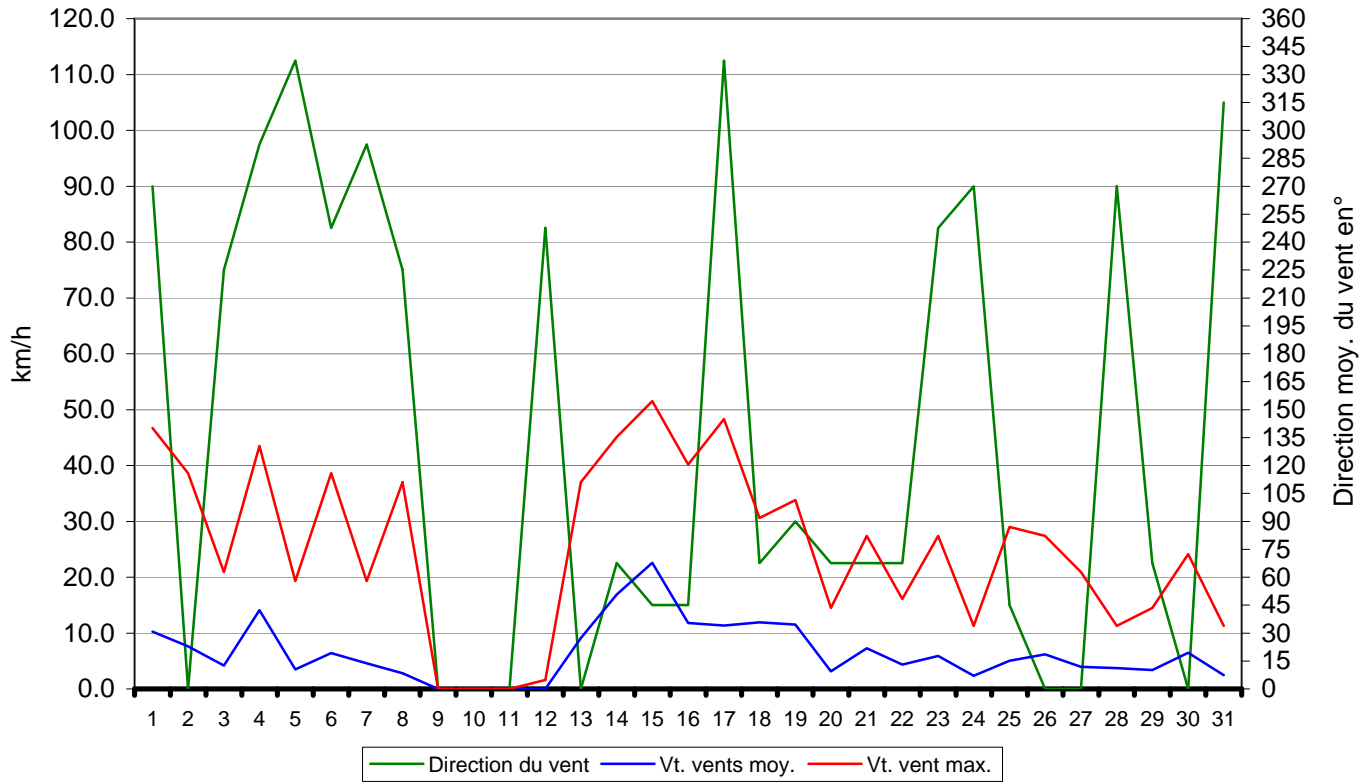
Précipitations - Etp. - Température - Humidité - Vents - Octobre 2009  
 Valeyres-sous-Montagny - www.meteo-vsm.ch



Pressions atm. moyennes - Durée d'ensoleillement - Octobre 2009  
 Valeyres-sous-Montagny - www.meteo-vsm.ch



Direction du vent - Vitesse max. - Vitesse moy. - Octobre 2009  
Valeyres-sous-Montagny - www.meteo-vsm.ch



## 4 Années

Température moyenne	Température total	Température moy. 2005	Température moy. 2006	Température moy. 2007	Température moy. 2008	Température moy. 200X
13.1	52.4	10.6	15.9	13.0	12.9	0.0
13.6	54.5	10.4	17.5	14.8	11.8	0.0
11.7	46.8	9.1	14.8	14.7	8.2	0.0
11.3	45.2	12.3	11.2	15.6	6.1	0.0
11.7	46.8	12.7	12.7	14.3	7.1	0.0
13.7	54.8	12.8	13.1	16.1	12.8	0.0
12.7	50.7	12.0	13.2	13.2	12.3	0.0
12.3	49.0	12.9	11.0	12.4	12.7	0.0
12.4	49.7	12.1	12.0	11.8	13.8	0.0
12.5	50.1	11.3	13.7	12.3	12.8	0.0
11.6	46.2	12.4	12.7	10.8	10.3	0.0
12.0	47.8	12.8	14.0	10.3	10.7	0.0
13.3	53.1	13.1	14.9	12.1	13.0	0.0
12.8	51.1	11.8	15.1	10.4	13.8	0.0
12.1	48.4	9.4	13.7	10.2	15.1	0.0
11.8	47.2	9.7	13.0	10.3	14.2	0.0
10.8	43.1	9.1	12.2	12.7	9.1	0.0
9.8	39.2	9.9	10.6	10.9	7.8	0.0
9.8	39.1	10.9	12.6	6.8	8.8	0.0
11.0	43.8	13.5	14.1	4.8	11.4	0.0
11.9	47.7	13.7	16.0	4.6	13.4	0.0
10.8	43.0	14.4	14.6	3.9	10.1	0.0
9.1	36.5	12.1	14.0	4.2	6.2	0.0
9.9	39.7	11.1	15.0	5.1	8.5	0.0
9.9	39.5	13.7	12.2	6.2	7.4	0.0
10.1	40.4	14.3	11.8	7.1	7.2	0.0
11.3	45.3	12.6	15.2	7.3	10.2	0.0
10.2	40.9	11.4	15.7	6.7	7.1	0.0
9.7	38.7	12.3	15.8	6.8	3.8	0.0
8.8	35.2	12.0	12.1	8.2	2.9	0.0
8.5	33.8	10.4	11.2	8.3	3.9	0.0

ensoleillement		3
1	08:38	
2	08:35	
3	08:31	
4	08:28	
5	08:25	
6	08:22	
7	08:19	
8	08:15	
9	08:12	07:48
10	08:09	
11	08:06	
12	08:03	
13	07:59	
14	07:56	
15	07:53	
16	07:50	
17	07:47	07:12
18	07:43	
19	07:40	
20	07:37	
21	07:34	
22	07:31	
23	07:27	
24	07:24	
25	07:21	
26	07:18	

27	07:15
28	07:11
29	07:08
30	07:05
31	07:02
	242:57