

Relevés climatiques

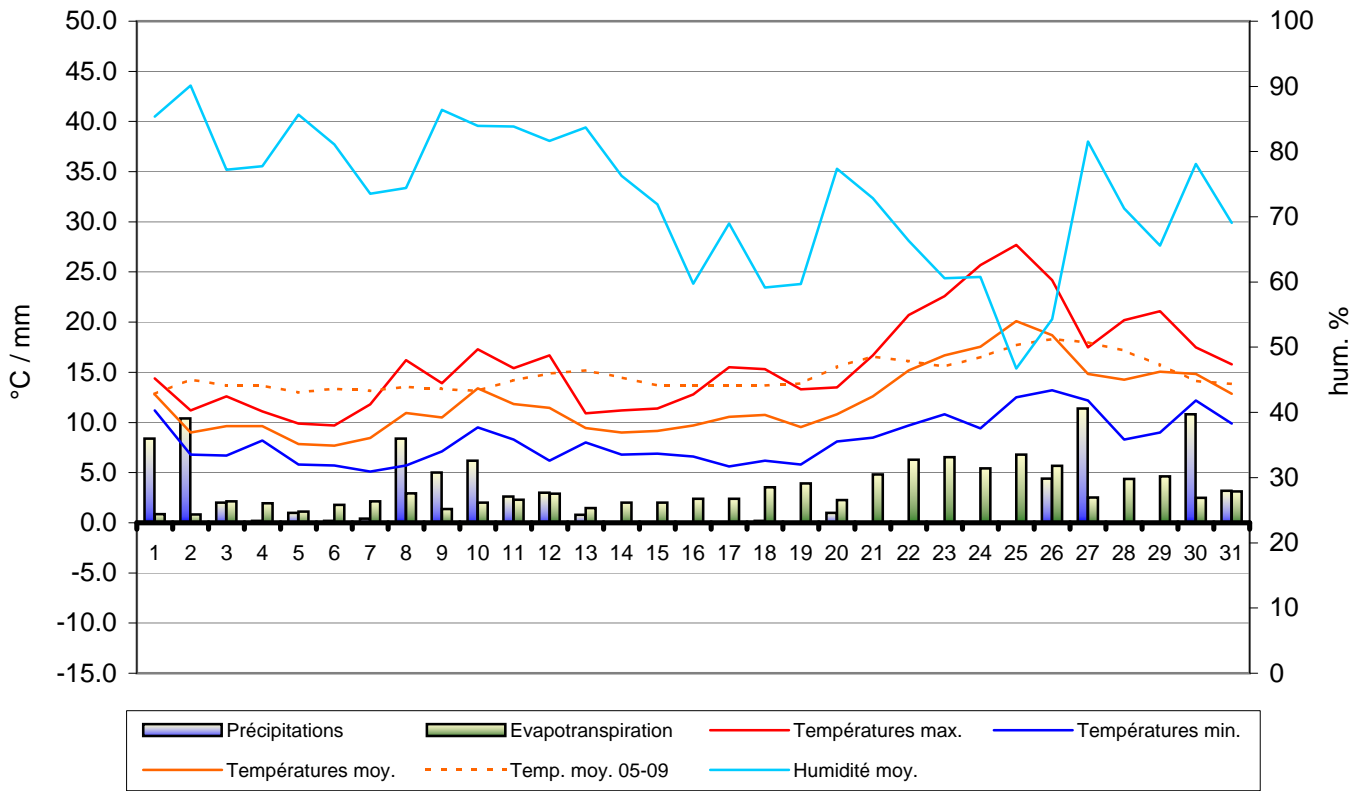
Valeires-sous-Montagny: Mai 2010

Mai 2010	Températures °C air/+2m			Humidité relative moy. %	Précipitations mm	Etp. mm	Durée ensoleillement	Rayonnement solaire W/m ²	Pression atm. moy. hPa	Vent moy. Km/h	Vent max. km/h	Dir. dominant du vent °
	Date	Moy.	Max.									
1	12.8	14.4	11.2	85.4	8.4	0.9	02:30	279	1013.3	4.2	19.3	247.5
2	9.0	11.2	6.8	90.1	10.4	0.8	02:20	315	1012.5	3.0	16.1	247.5
3	9.7	12.6	6.7	77.2	2.0	2.1	08:00	755	1012.6	7.7	41.8	247.5
4	9.7	11.1	8.2	77.8	0.2	1.9	00:00	130	1010.3	27.0	66.0	67.5
5	7.9	9.9	5.8	85.7	1.0	1.1	00:00	190	1006.6	19.0	49.9	67.5
6	7.7	9.7	5.7	81.1	0.2	1.8	06:30	538	1005.8	11.6	45.1	292.5
7	8.5	11.8	5.1	73.5	0.4	2.1	09:00	908	1009.4	4.9	19.3	247.5
8	11.0	16.2	5.7	74.4	8.4	2.9	10:00	1132	1010.4	2.5	30.6	67.5
9	10.5	13.9	7.1	86.4	5.0	1.4	06:10	516	1010.2	1.3	22.5	247.5
10	13.4	17.3	9.5	83.9	6.2	2.0	05:50	873	1007.6	6.8	40.2	67.5
11	11.9	15.4	8.3	83.9	2.6	2.3	07:30	791	1006.4	7.4	48.3	247.5
12	11.5	16.7	6.2	81.6	3.0	2.9	08:30	1099	1008.8	5.1	32.2	225.0
13	9.5	10.9	8.0	83.7	0.8	1.5	06:10	461	1010.7	6.8	24.1	112.5
14	9.0	11.2	6.8	76.3	0.0	2.0	04:30	1027	1010.9	9.0	29.0	67.5
15	9.2	11.4	6.9	71.9	0.0	2.0	05:10	489	1011.7	11.1	40.2	67.5
16	9.7	12.8	6.6	59.8	0.0	2.4	07:50	803	1019.7	6.2	33.8	112.5
17	10.6	15.5	5.6	69.0	0.0	2.4	07:10	1037	1025.4	5.8	46.7	67.5
18	10.8	15.3	6.2	59.2	0.2	3.5	10:00	1088	1027.3	9.0	49.9	0/360
19	9.6	13.3	5.8	59.7	0.0	3.9	11:00	896	1027.1	12.6	40.2	0/360
20	10.8	13.5	8.1	77.4	1.0	2.3	07:20	700	1029.2	9.3	29.0	67.5
21	12.6	16.7	8.5	72.9	0.0	4.8	09:50	887	1027.5	19.0	45.1	67.5
22	15.2	20.7	9.7	66.3	0.0	6.3	11:50	895	1023.6	17.1	41.8	67.5
23	16.7	22.6	10.8	60.6	0.0	6.6	11:50	898	1020.2	12.8	38.6	67.5
24	17.6	25.7	9.4	60.8	0.0	5.4	11:40	881	1017.1	5.3	24.1	32.5
25	20.1	27.7	12.5	46.7	0.0	6.8	11:30	924	1013.4	9.1	41.8	270.0
26	18.7	24.2	13.2	54.3	4.4	5.7	09:20	1060	1010.5	14.8	74.0	225.0
27	14.9	17.5	12.2	81.5	11.4	2.5	07:00	1031	1012.2	9.0	33.8	225.0
28	14.3	20.2	8.3	71.3	0.0	4.4	11:00	1014	1015.7	8.3	41.8	247.5
29	15.1	21.1	9.0	65.6	0.0	4.6	10:00	1012	1018.9	8.3	45.1	180.0
30	14.9	17.5	12.2	78.1	10.8	2.5	07:10	498	1016.1	16.4	53.1	225.0
31	12.9	15.8	9.9	69.1	3.2	3.1	07:20	880	1017.4	12.3	49.9	292.5

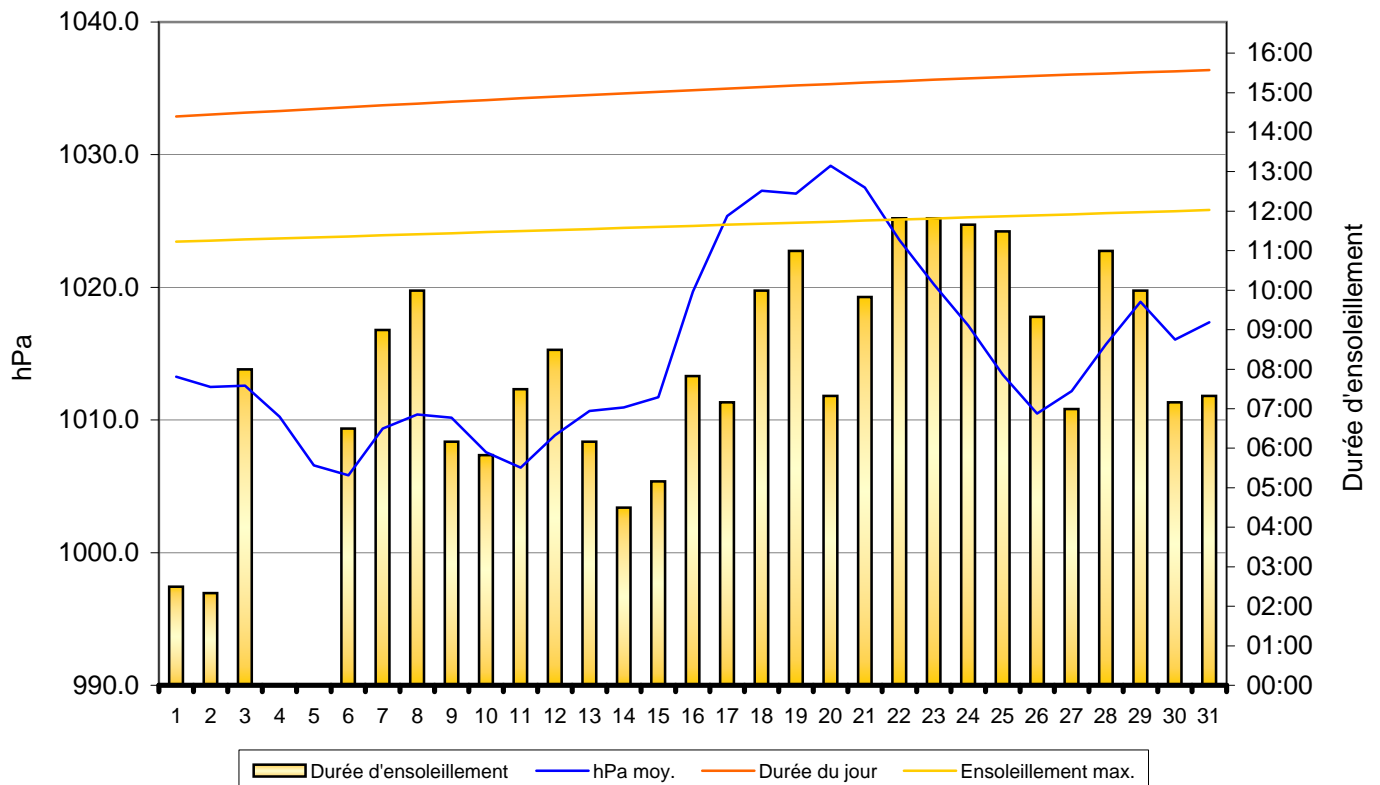
Température moy:	12.1 °C		Humidité moy:	73.1 %
Température max:	27.7 °C	Mai: 25	Ray. solaire :	774.4 W/m²
Température min:	5.1 °C	Mai: 7	Ensoleillement:	234:00 hhh:mm
Temp. moy. Mai. 05 - 09:	14.7 °C		Pression atm. Moy:	1015.1 hPa
Précipitations:	79.6 mm		Vent moyen:	9.8 km/h
Evapotranspiration:	94.9 mm		Rafale maximum:	74.0 km/h
Bilan hydrique:	-15.3 mm		Dir. dominant du vent:	67.5 en °

Observations:

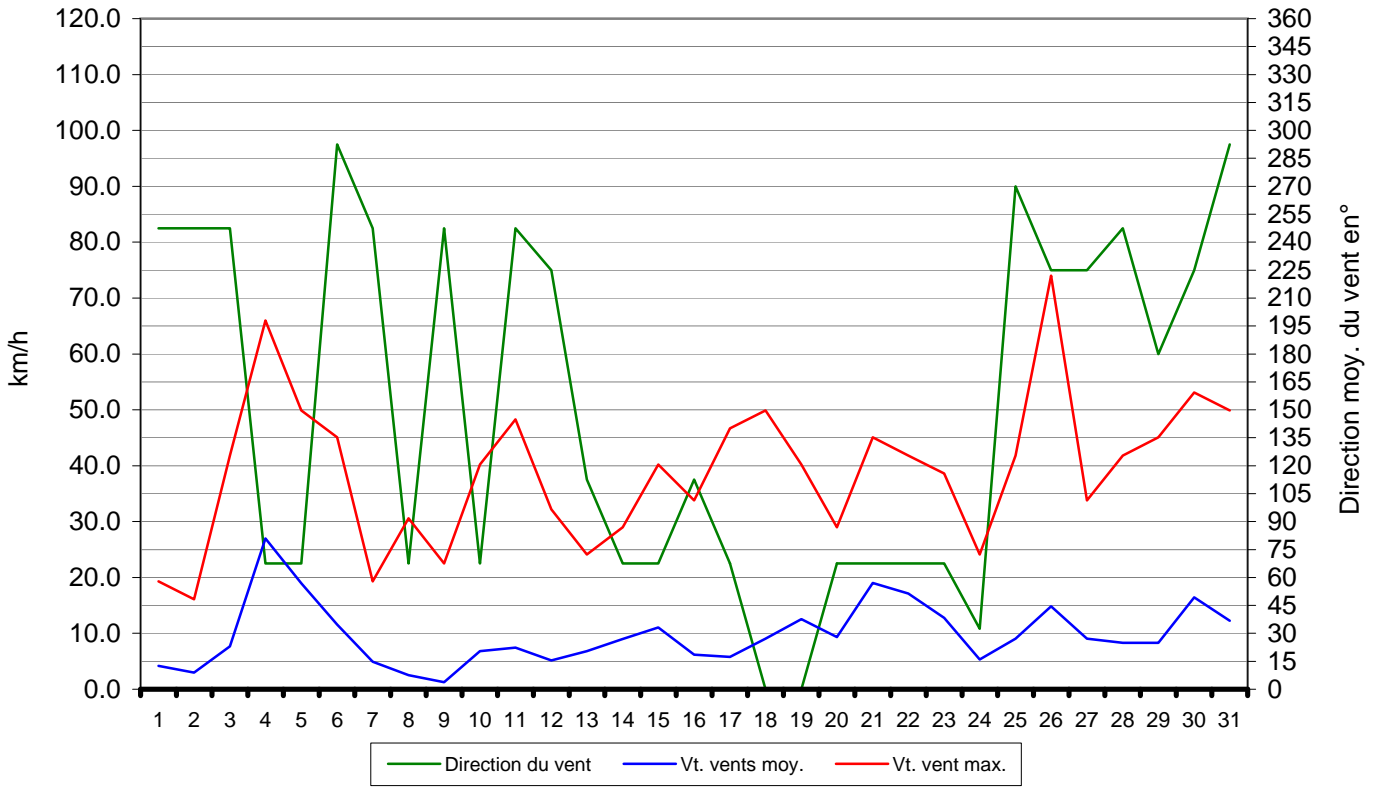
Précipitations - Etp. - Température - Humidité - Vents - Mai 2010
Valeyres-sous-Montagny - www.meteo-vsm.ch



Pressions atm. moyennes - Durée d'ensoleillement - Mai 2010
Valeyres-sous-Montagny - www.meteo-vsm.ch



Direction du vent - Vitesse max. - Vitesse moy. - Mai 2010
 Valeyres-sous-Montagny - www.meteo-vsm.ch



5 Années

Température moyenne	Température total	Température moy. 2005	Température moy. 2006	Température moy. 2007	Température moy. 2008	Température moy. 2009	Température moy. 200X
12.8	64.1	19.0	8.6	16.3	9.4	10.8	0.0
14.3	71.4	18.1	15.0	13.4	11.9	13.0	0.0
13.7	68.4	14.5	15.9	13.2	12.9	11.9	0.0
13.7	68.4	12.5	17.7	13.1	13.7	11.4	0.0
13.0	64.9	11.2	17.3	12.7	14.7	9.0	0.0
13.4	66.9	10.2	14.1	15.3	13.2	14.1	0.0
13.2	65.8	10.0	14.3	14.0	13.6	13.9	0.0
13.6	67.8	10.8	11.4	13.9	14.6	17.1	0.0
13.3	66.7	11.8	8.2	16.2	15.0	15.5	0.0
13.1	65.7	8.9	8.4	16.4	15.9	16.1	0.0
14.2	71.1	10.9	12.8	17.3	14.2	15.9	0.0
14.9	74.3	11.7	14.7	18.0	13.2	16.7	0.0
15.2	75.9	13.4	15.7	16.8	14.7	15.3	0.0
14.5	72.5	12.4	14.8	13.4	15.3	16.6	0.0
13.7	68.5	14.2	16.7	11.2	14.2	12.2	0.0
13.7	68.4	10.1	18.6	9.9	15.6	14.2	0.0
13.7	68.4	11.0	19.5	10.4	12.7	14.8	0.0
13.7	68.4	10.6	16.2	15.2	13.0	13.4	0.0
13.9	69.4	11.0	14.8	16.2	12.1	15.3	0.0
15.5	77.7	15.3	13.2	18.7	13.2	17.3	0.0
16.6	83.0	15.6	16.1	19.3	11.2	20.8	0.0
16.1	80.6	14.5	14.5	19.3	12.9	19.4	0.0
15.6	77.9	11.5	13.1	20.5	13.6	19.2	0.0
16.5	82.6	12.1	11.8	20.0	15.3	23.4	0.0
17.7	88.5	16.2	12.5	22.1	15.6	22.1	0.0
18.3	91.5	19.8	18.3	17.8	17.6	18.0	0.0
18.0	89.9	21.6	19.8	15.5	19.7	13.3	0.0
17.2	85.9	22.8	18.4	9.8	18.9	16.0	0.0
15.7	78.6	22.2	11.9	9.7	18.8	16.0	0.0
14.1	70.6	17.6	9.5	10.2	17.7	15.6	0.0
13.9	69.3	14.8	8.7	15.2	15.5	15.1	0.0

ensoleillement		1.38
1	11:14	
2	11:15	
3	11:17	
4	11:19	11:00
5	11:20	
6	11:22	
7	11:23	
8	11:25	
9	11:27	
10	11:28	
11	11:30	
12	11:31	
13	11:33	
14	11:35	
15	11:36	
16	11:38	
17	11:39	
18	11:41	
19	11:43	
20	11:44	
21	11:46	
22	11:47	11:18
23	11:49	
24	11:51	
25	11:52	11:48
26	11:54	

27	11:55
28	11:57
29	11:59
30	12:00
31	12:02
	360:45