

Relevés climatiques

Valeyres-sous-Montagny: Octobre 2012

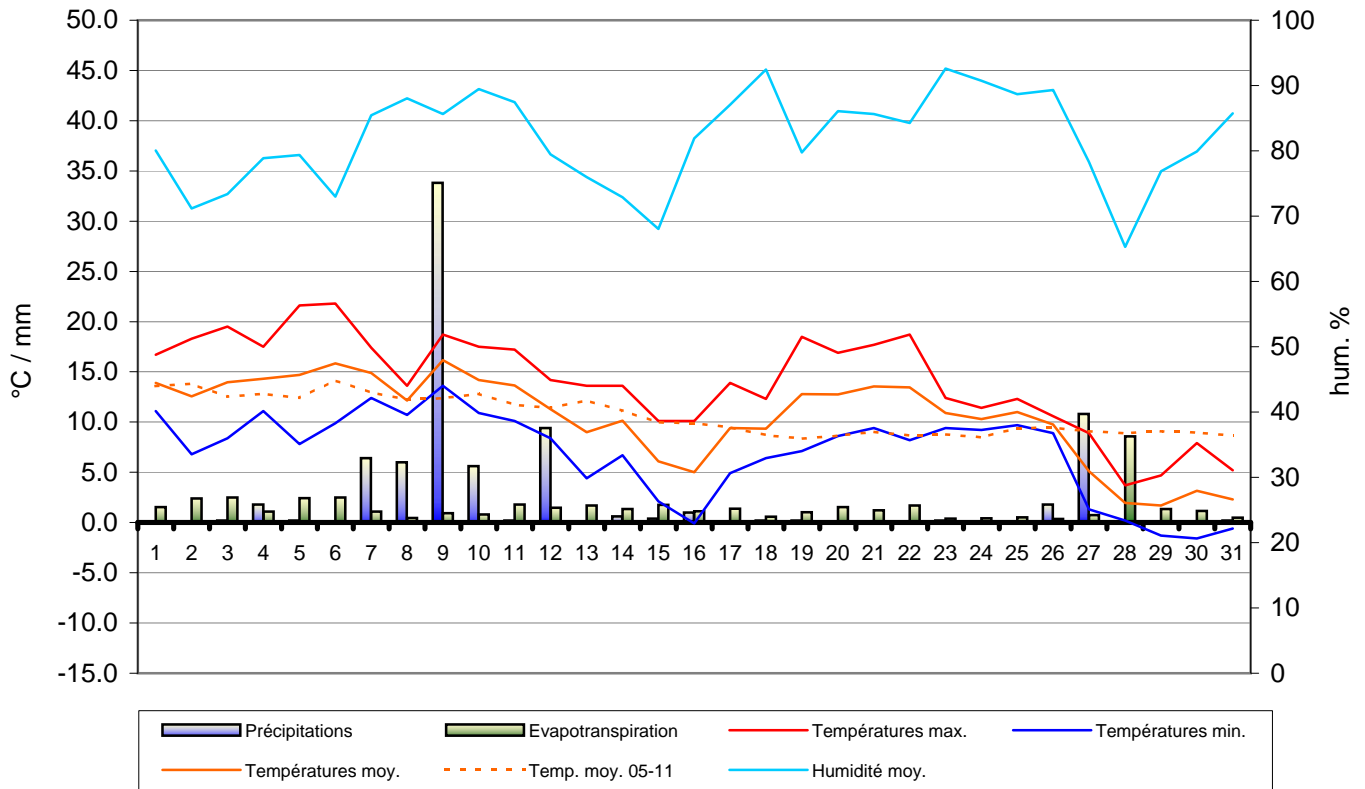
Oct. 2012	Températures °C air/+2m			Humidité relative moy. %	Précipitations mm	Etp. mm	Durée ensoleillement	Rayonnement solaire W/m ²	Pression atm. moy. hPa	Vent moy. Km/h	Vent max. km/h	Dir. dominant du vent °
	Date	Moy.	Max.									
1	13.9	16.7	11.1	80.0	0.0	1.5	5:00	611	1020.2	3.7	25.7	0/360
2	12.6	18.3	6.8	71.2	0.0	2.4	7:20	609	1021.3	3.6	25.7	0/360
3	14.0	19.5	8.4	73.4	0.2	2.5	6:10	756	1019.8	7.0	35.4	0/360
4	14.3	17.5	11.1	78.9	1.8	1.1	0:00	161	1024.6	8.7	45.1	0/360
5	14.7	21.6	7.8	79.4	0.2	2.4	8:00	556	1019.9	4.8	22.5	225.0
6	15.9	21.8	9.9	73.0	0.0	2.5	6:20	630	1019.1	6.1	32.2	270.0
7	14.9	17.4	12.4	85.4	6.4	1.1	0:30	405	1018.8	9.7	48.3	225.0
8	12.2	13.6	10.7	88.1	6.0	0.5	6:10	220	1020.2	5.1	24.1	67.5
9	16.2	18.7	13.6	85.6	33.8	0.9	1:20	418	1015.0	7.2	30.6	270.0
10	14.2	17.5	10.9	89.5	5.6	0.8	2:20	360	1014.0	5.2	29.0	270.0
11	13.7	17.2	10.1	87.5	0.2	1.8	5:30	731	1018.4	2.5	19.3	157.5
12	11.3	14.2	8.4	79.5	9.4	1.5	2:30	356	1013.9	10.7	62.8	247.5
13	9.0	13.6	4.4	76.0	0.0	1.7	6:40	541	1015.5	4.2	32.2	270.0
14	10.2	13.6	6.7	72.9	0.6	1.4	2:10	303	1005.9	7.5	57.9	225.0
15	6.1	10.1	2.1	68.0	0.4	1.8	4:30	769	1011.0	8.8	54.7	270.0
16	5.0	10.1	-0.1	81.9	1.0	1.1	4:40	769	1016.7	3.4	17.7	225.0
17	9.4	13.9	4.9	87.1	0.0	1.4	6:30	616	1016.1	2.5	16.1	337.5
18	9.4	12.3	6.4	92.4	0.2	0.6	0:40	258	1015.9	2.0	14.5	32.5
19	12.8	18.5	7.1	79.8	0.2	1.0	6:00	526	1017.5	1.9	17.7	337.5
20	12.8	16.9	8.6	86.1	0.0	1.5	5:50	577	1019.8	3.5	11.3	32.5
21	13.6	17.7	9.4	85.6	0.0	1.2	5:50	459	1018.3	3.5	14.5	67.5
22	13.5	18.7	8.2	84.2	0.0	1.7	6:40	476	1020.8	3.0	14.5	337.5
23	10.9	12.4	9.4	92.6	0.2	0.4	0:00	131	1022.1	7.1	19.3	67.5
24	10.3	11.4	9.2	90.7	0.0	0.4	0:00	114	1020.0	6.2	19.3	45.0
25	11.0	12.3	9.7	88.7	0.0	0.5	0:00	192	1016.0	3.6	17.7	45.0
26	9.8	10.6	8.9	89.3	1.8	0.4	0:00	116	1005.4	6.6	20.9	67.5
27	5.1	8.9	1.3	78.3	10.8	0.7	0:00	99	998.9	11.1	46.7	45.0
28	2.0	3.7	0.2	65.3	0.0	8.6	2:20	354	1032.5	28.8	70.8	45.0
29	1.7	4.7	-1.3	76.9	0.0	1.3	5:00	529	1018.3	7.3	25.7	45.0
30	3.2	7.9	-1.6	79.9	0.0	1.1	6:30	466	1012.3	2.4	12.9	270.0
31	2.3	5.2	-0.6	85.7	0.2	0.5	0:50	272	969.2	3.7	19.3	45.0

Température moy:	10.5 °C	Humidité moy:	81.7 %
Température max:	21.8 °C	Ray. solaire :	431.6 W/m²
Température min:	-1.6 °C	Ensoleillement:	115:20 hhh:mm
Temp. moy. Oct. 05 - 11:	10.8 °C	Pression atm. Moy:	1015.4 hPa
Précipitations:	79.0 mm	Vent moyen:	6.2 km/h
Evapotranspiration:	46.3 mm	Rafale maximum:	70.8 km/h
Bilan hydrique:	32.7 mm	Dir. dominant du vent:	0/360 en °

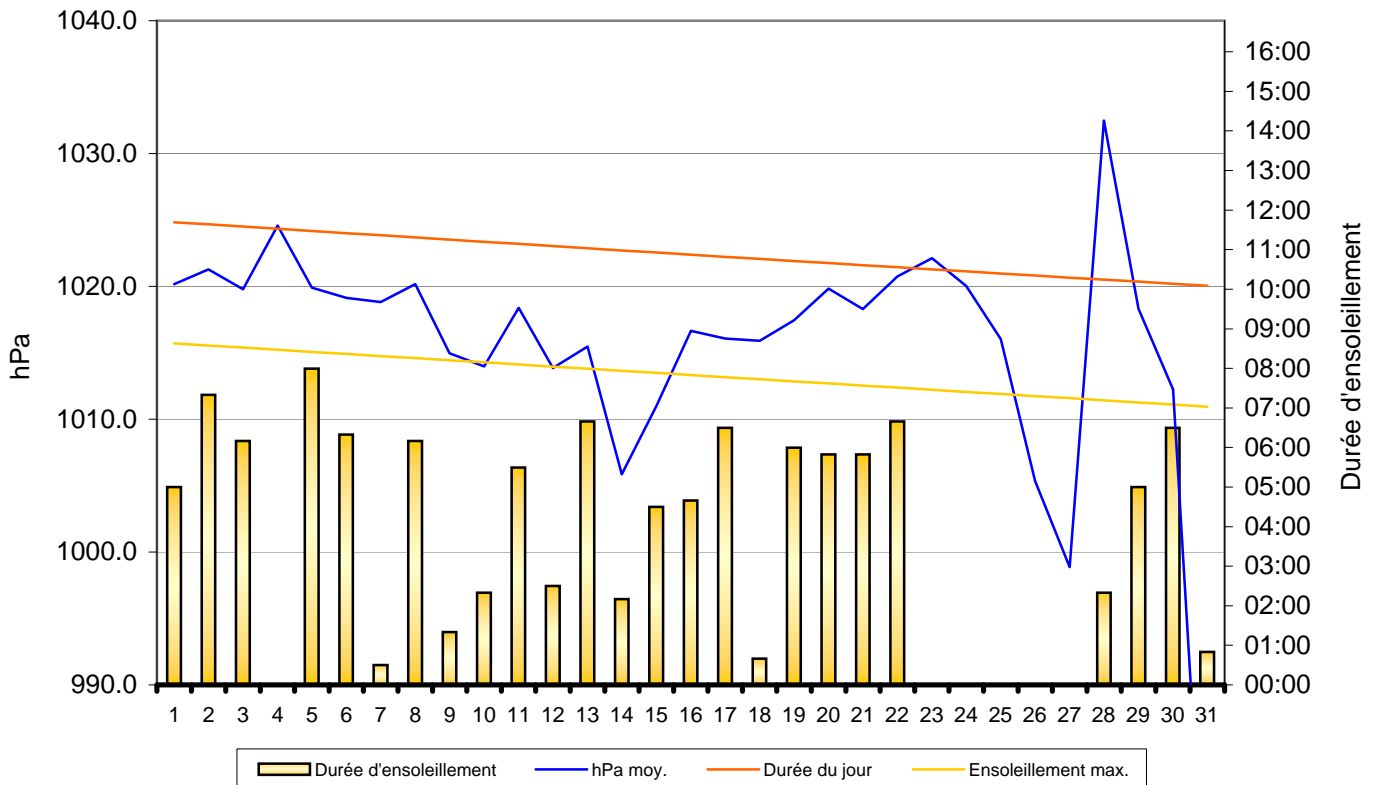
Observations:

Changer carte mère ISS. Déplacer répéteur "A" (amélioration de la réception) Remplacé 2 condensateurs. Un mois qui se caractérise par de fort contraste.

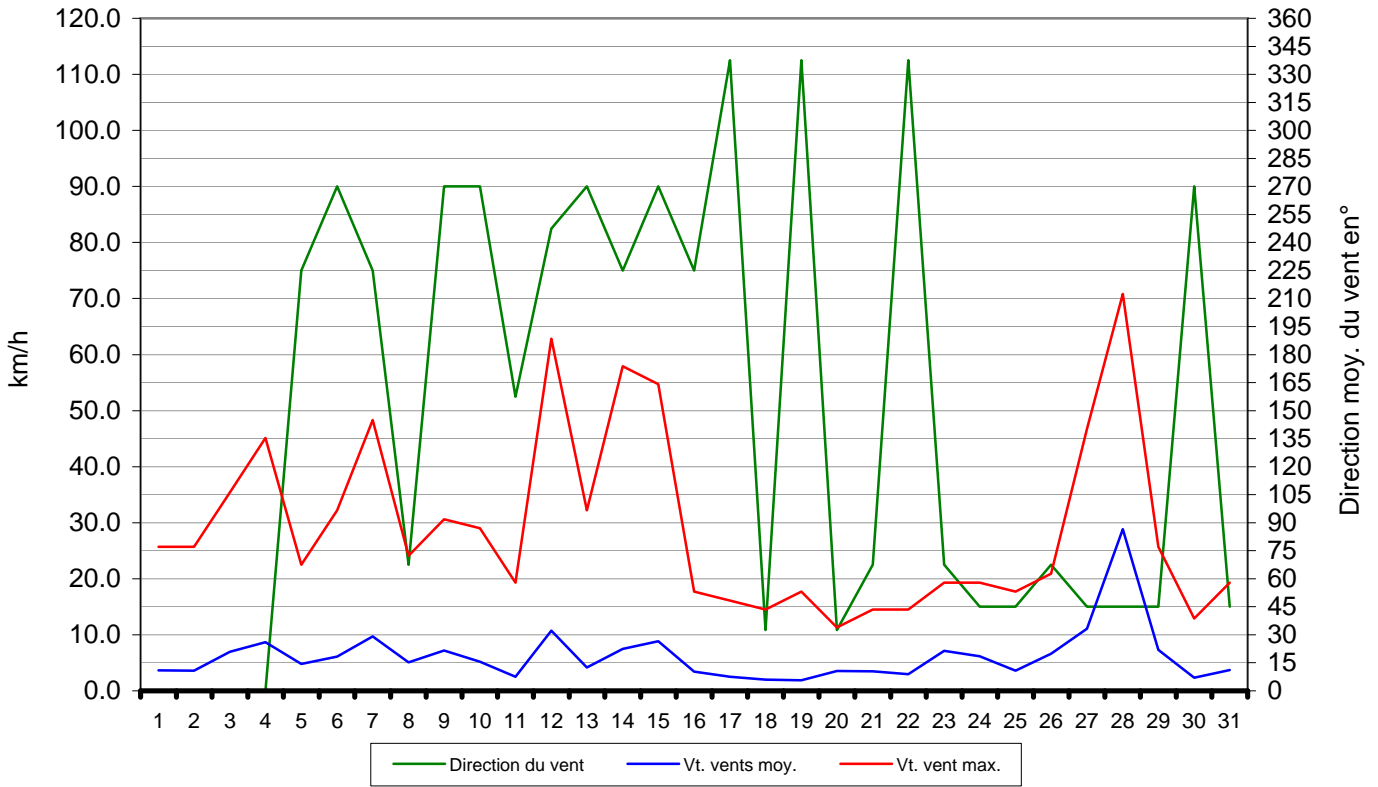
Précipitations - Etp. - Température - Humidité - Vents - Octobre 2012
Valeyres-sous-Montagny - www.meteo-vsm.ch



Pressions atm. moyennes - Durée d'ensoleillement - Octobre 2012
Valeyres-sous-Montagny - www.meteo-vsm.ch



Direction du vent - Vitesse max. - Vitesse moy. - Octobre 2012
Valeyres-sous-Montagny - www.meteo-vsm.ch



	7	Années	1	2	3	4	5	6	7
Température moyenne	Température total	Température moy. 2005	Température moy. 2006	Température moy. 2007	Température moy. 2008	Température moy. 2009	Température moy. 2010	Température moy. 2011	
13.6	95.1	10.6	15.9	13.0	12.9	15.8	12.5	14.4	
13.8	96.6	10.4	17.5	14.8	11.8	13.4	14.3	14.4	
12.5	87.8	9.1	14.8	14.7	8.2	11.9	14.3	14.8	
12.8	89.7	12.3	11.2	15.6	6.1	14.6	14.5	15.4	
12.4	86.9	12.7	12.7	14.3	7.1	11.8	13.9	14.4	
14.1	99.0	12.8	13.1	16.1	12.8	17.0	12.8	14.4	
12.9	90.5	12.0	13.2	13.2	12.3	18.4	12.6	8.8	
12.2	85.7	12.9	11.0	12.4	12.7	15.9	13.4	7.4	
12.4	86.5	12.1	12.0	11.8	13.8	15.1	13.3	8.4	
12.8	89.7	11.3	13.7	12.3	12.8	14.6	12.6	12.4	
11.7	82.2	12.4	12.7	10.8	10.3	12.9	9.7	13.4	
11.4	79.9	12.8	14.0	10.3	10.7	10.4	8.8	12.9	
12.2	85.1	13.1	14.9	12.1	13.0	8.4	10.0	13.6	
11.1	77.9	11.8	15.1	10.4	13.8	6.4	9.5	10.9	
10.0	69.8	9.4	13.7	10.2	15.1	3.7	9.4	8.3	
9.9	69.3	9.7	13.0	10.3	14.2	5.4	7.3	9.4	
9.5	66.2	9.1	12.2	12.7	9.1	5.7	7.1	10.3	
8.7	61.0	9.9	10.6	10.9	7.8	4.5	7.5	9.8	
8.4	58.5	10.9	12.6	6.8	8.8	4.4	5.6	9.4	
8.6	60.4	13.5	14.1	4.8	11.4	4.2	6.6	5.8	
9.0	63.2	13.7	16.0	4.6	13.4	7.8	3.2	4.5	
8.7	60.7	14.4	14.6	3.9	10.1	10.0	3.3	4.4	
8.8	61.3	12.1	14.0	4.2	6.2	9.6	9.3	5.9	
8.5	59.4	11.1	15.0	5.1	8.5	7.3	7.0	5.4	
9.4	65.9	13.7	12.2	6.2	7.4	11.5	6.0	8.9	
9.4	66.1	14.3	11.8	7.1	7.2	11.4	5.6	8.7	
9.1	63.7	12.6	15.2	7.3	10.2	7.7	3.8	6.9	
8.9	62.2	11.4	15.7	6.7	7.1	6.9	5.8	8.6	
9.1	63.6	12.3	15.8	6.8	3.8	7.7	6.3	10.9	
9.0	62.7	12.0	12.1	8.2	2.9	7.2	9.1	11.2	
8.6	60.5	10.4	11.2	8.3	3.9	7.7	9.1	9.9	

ensoleillement		3
1	08:38	
2	08:35	
3	08:31	
4	08:28	
5	08:25	
6	08:22	
7	08:19	
8	08:15	
9	08:12	07:48
10	08:09	
11	08:06	
12	08:03	
13	07:59	
14	07:56	
15	07:53	
16	07:50	
17	07:47	07:12
18	07:43	
19	07:40	
20	07:37	
21	07:34	
22	07:31	
23	07:27	
24	07:24	
25	07:21	
26	07:18	

27	07:15
28	07:11
29	07:08
30	07:05
31	07:02
	242:57

